

Technical data



Technical
data

Stage V

New



Technical data on the Park Ranger 2155e
- basic machine and attachments



Technical specifications

Basic machine

Length	mm	2278
Width with / without cabin	mm	1245 / 1020
Height with / without cabin	mm	1987 / 1350
Weight with / without cabin ¹⁾	kg	835 / 695
Payload with / without cabin ¹⁾	kg	665 / 805
Gross vehicle weight (GVW)	kg	1500
Turning circle - kerb to kerb	mm	3180
Turning circle - inside	mm	1120
Battery capacity	kWh	23,5
4-wheel drive		Standard

¹⁾ Includes: 75 kg operator.



Quiet, strong, and sustainable

- and a multifunctional machine with many possibilities

The Park Ranger 2155e is the latest member of the Egholm family - a 100% electric version of the popular Park Ranger 2155 utility machine.

The Park Ranger 2155e builds on three decades of experience and innovation - and sets a new standard for sustainable cleaning and maintenance. With easy operation, high comfort and low noise level, the Park Ranger 2155e is designed for the cities and green spaces of the future.

With compact dimensions and great manoeuvrability you have easy access to narrow areas and places and versatile handling of all groundcare and winter assignments as well as the suction/sweeper tasks.

Compatible attachment program

Attachments for previous Park Ranger models can also be used on the Park Ranger 2155e. A wide range of attachments allows for diverse applications for the Park Ranger 2155e.

Top performance in every aspect

Egholm makes no compromises in quality. All attachments are carefully designed to supply the optimum performance in its specific area. High quality materials and functional couplings, ensures professional results and durable performance.

Quick change of attachments

All attachments can be changed by one person in less than 4 minutes - no tools needed to shift, and no heavy

lifting involved! You can, therefore, easily use the machine for different tasks during the day without wasting time on attachment changes in the workshop.

For Park Ranger 2155e the following attachments are available:

Sweeping tasks

- Suction sweeper
- Weed brush

Groundcare tasks

- Rotary, mulch or collection mower 1000
- Rotary or mulch mower 1200
- Rotary or mulch mower 1500
- Grass collector
- Hedge cutter
- Flail mower
- Lawn edger
- Environmental rake
- Leaf suction unit
- Tipping shovel
- Tipper trailer
- Load carrier with tip

Winter tasks

- Snow sweeper
- Snow blower
- Snow plough
- Snow V-plough
- Salt and sand spreader



Basic machine

- Park Ranger 2155e

Standard equipment:

Charger - Standard 230V - 1 x 10A	The standard charger for the Park Ranger 2155e is a 230V charger (1 x 10A). It charges the battery from 10 to 90 % in a maximum of 14 hours. Ideal for everyday use - plug in, charge, and be ready for the next workday with full performance.
Battery - 23 kWh LFP	LiFePO ₄ battery technology for high safety and long lifespan. Offers exceptional stability during operation and charging.
Display with touch and physical buttons	Intuitive and modern display with easy access to settings and information, as well as diagnostics for quick fault detection. Buttons ensure easy operation of cruise control and PTO power (oil flow) while driving and working.
Cruise control with inch function	Cruise control function for consistent speed and fatigue-free working. The inching function allows you to reduce the speed during turning maneuvers.
High precision driving pedal	Allows for precise control during attachment operation and tight-space maneuvering.
Automatic hill-hold function	Prevents rollback on slopes, making it safer and easier to operate on hilly terrain.
Electric cabin heating	Provides instant warmth and comfort for the operator.
Tyres 18 x 8.50-8 / 8 layers	An all-round tyre that can be used all year round. The large width of the tyre ensures minimal surface pressure.
Drive	Permanent electric 4-wheel drive. Pure electric-driven utility machine only requiring minimal maintenance.
Regulation of brush speed	Speed regulation of front brushes.
Lights and mirrors	Models with a cabin are fitted with EU-approved LED dipped beam, turn signals, position lights and rear lights. Side mirrors are mounted on the side of the cabin. Models without cabin are fitted with EU-approved LED rear lights.
USB socket	USB socket (5 V) in the ceiling for mobile phone charger, GPS etc. is standard in machine with cabin.
Trailer hitch	Ball hitch and electric plug for trailer. TÜV approved (acc. ECE R55).
Mechanical seat - Cobo	Seat with mechanical suspension and hydraulic shock absorber, stepless weight adjustment from 50-120 kg, height adjustment, longitudinal adjustment on rails, and synthetic leather upholstery. The seat can be mounted on Park Ranger 2155e with or without cabin.
Hooks and pockets for storage	Machines with cabin have hooks and pockets for practical storage of various items during transport.
Roof hatch	Machines with cabin have a roof hatch for additional air ventilation in the cabin.
Change of attachments	Quick change of attachments - no tools required (4 min.).
Colour	Green RAL6018.

Extra equipment (options):

Cabin	ROPS approved cabin including lights, mirrors, opening rear windows and roof hatch, number plate kit (front + rear), cabin light and heating. The cabin is mounted on dampers, which means less vibration for the operator.
Rear view camera	For additional visual control of the rear area. Option for machine with cabin.
Heated side view mirrors	A convenient way to clear away ice, snow and dew from your mirrors. Option for machine with cabin.
LED working lights - front	Two front mounted LED working lights provides a wide bright light improving the driver's view of the terrain. Option for machine with cabin.
LED working light - rear	One additional LED working light can be placed at the top of the back of the cabin and is suitable for night work. Option for machine with cabin.
Beacon	Beacon light can be mounted in either left and/or right side of the machine. The rotating warning light alerts about the presence of the machine at a 360 degree angle. Option for machine with cabin.
Flash lights	Flash lights for mounting on Park Ranger 2155e with cabin can be purchased as an extra for extra safety. Option for machine with cabin.
Mechanical seat - Grammer	Seat with mechanical suspension and hydraulic shock absorber, stepless weight adjustment from 50-130 kg, height adjustment, longitudinal adjustment on rails, backrest tilt adjustment, mechanically adjustable lumbar support, and synthetic leather upholstery. The seat can be mounted on Park Ranger 2155e with or without cabin.
Air suspension seat - Cobo	Seat with air suspension and hydraulic shock absorber, automatic weight adjustment from 50-130 kg, height adjustment, longitudinal adjustment on rails, and synthetic leather upholstery. The seat can be mounted on Park Ranger 2155e with or without cabin.
Air suspension seat - Cobo SR840	Seat with air suspension and hydraulic shock absorber, horizontal suspension, automatic weight adjustment from 50-130 kg, height adjustment, longitudinal adjustment on rails, and synthetic leather upholstery. Tilt-adjustable backrest up to 24° and folds forward. Driver detection system (seat contact plate) that works even under difficult conditions. The seat can be mounted on Park Ranger 2155e with or without cabin.
Armrests - Grammer	Can be mounted for optimal comfort on Grammer seat. The armrests can be adjusted up and down.
Armrests - Cobo	Can be mounted for optimal comfort on mechanical standard seat and the air suspension Cobo seat.
Armrests - Cobo SR840	Can be mounted for optimal comfort on air suspension Cobo SR840 seat.

Basic machine

- Park Ranger 2155e



1245 mm



2278 mm



1350 mm
1987 mm

Extra equipment (options): Continued...

Cup holder	Holder for cup, water bottle etc. combined with storage space for e.g. cell phone. Is located at a practical distance from the operator in the cabin. Option for machine with cabin.
Radio	Bluetooth radio with USB and AUX. Option for machine with cabin.
DAB+ radio	DAB+ radio with Bluetooth, USB and AUX. Option for machine with cabin.
Load carrier	A practical little load carrier that provides room to transport hand tools.
Rear lifter	A necessary option when using an environmental rake - to lower and lift the rake. Expands the possibilities for using alternative attachment solutions.
Counterweight	It is recommend to use a counterweight on the back of the Park Ranger 2155e when using the flail mower or the snow blower without salt and sand spreader. 2 x 18,5 kg.
Shovel and broom holder	A little smart option that provides room to bring a shovel and a broom on the machine.
Anti-corrosion treatment	The anti-corrosion treatment of the basic machine is recommended when operating in the winter season.
Charger - Quick 400V - 3 x 16A	Quick charging with the 400V charger (3 x 16A), which charges the battery from 10 to 90 % in just 3 hours. Perfect for operators who need minimal downtime and maximum productivity.
Charger - Super 400V - 3 x 32A	Ultra-fast charging with the 400V charger (3 x 32A), which charges the battery from 20 to 80 % in just 1 hour, keeping your machine ready for action with minimal waiting time. Ideal for demanding operations with tight schedules.

Technical specifications

Dimensions		
Length	mm	2278
Width with / without cabin	mm	1245 / 1020
Height with / without cabin	mm	1987 / 1350
Wheelbase	mm	1044
Weights		
Weight with / without cabin ¹⁾	kg	835 / 695
Payload with / without cabin ¹⁾	kg	665 / 805
Gross vehicle weight (GVW)	kg	1500
Allowed axle load, front	kg	800
Allowed axle load, back	kg	800
Max. permitted trailer weight without brakes	kg	750
Max. combined weight without brakes	kg	2250
Max. permitted trailer weight with brakes	kg	1500
Max. combined weight with brakes	kg	3000
Performance		
Turning circle - kerb to kerb	mm	3180
Turning circle - inside	mm	1120
Max. speed	km/h	20
Working hydraulic (PTO) (@170 bar)	l/min.	37
Working hydraulic (PTO) - max. pressure	bar	225
Auxiliary hydraulic (AUX) (@150 bar)	l/min.	9
Auxiliary hydraulic (AUX) - max. pressure	bar	175
Noise level		
Passing - outside (EU 2018/985 Ann. III)	dB(A)	69
Operators seat - inside (EU 1322/2014 Ann. XIII)	dB(A)	0
Battery		
Type	LFP	
Voltage	V	51,2
Capacity	kWh	23,5
Max. power	kW	23,5
Driveline		
Type	Electrical 4WD	
Max. power net (ECE R85)	kW	16
EU vehicle class		T2a
Type approval		EU regulation 167/2013

¹⁾ Includes: 75 kg operator.





Video



Suction sweeper

- Park Ranger 2155e

Standard equipment:

Hopper

As standard the hopper has a self-cleaning rotation filter system and a fresh water tank with 100 l capacity.

Front brush unit - 2 or 3 brushes

Consists of 2 front brushes and a suction mouth or 2 front brushes, 1 side brush and a suction mouth. Each brush is equipped with a water sprayer to prevent dust spreading while the unit is working. The suction mouth is designed with few mechanical parts for lower operation and maintenance costs.

The side brush extends the sweeping width to 1660 mm and is perfect for sweeping in corners, under benches etc. With the side brush sweeping is possible at two levels: while the two front brushes sweep the road, the side brush can sweep the pavement or a higher stair step.

If the side brush is needed, this is a factory mounted solution.

Height regulation

Nose wheel for height regulation of the front brushes for excellent sweeping result and minimal brush wear.

Hopper stand

Frame for easy fitting, removal and storage of the hopper.

Speed adjustment

Adjustable speed of the front brushes is standard.

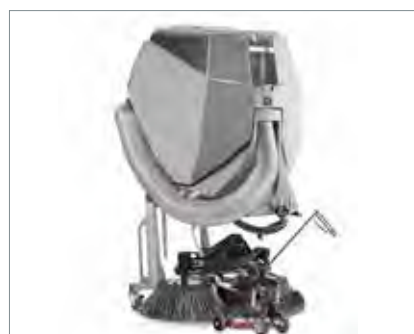
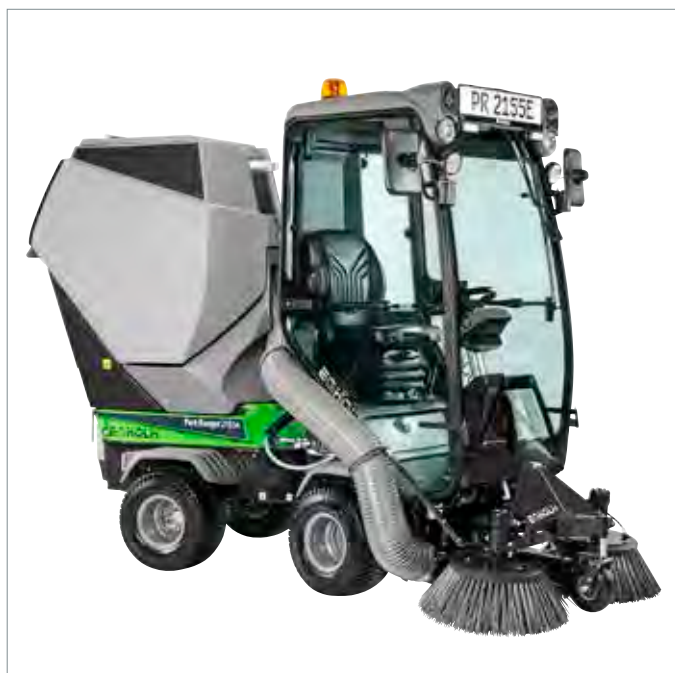
Water meter

A water meter on the side of the hopper ensuring an excellent overview over water consumption and capacity.

Extra equipment (options):

External wander hose

The external suction hose is useful in areas that cannot be reached by the suction sweeper unit. With easy access, great mobility and excellent suction, cleaning can be done quickly around rubbish bins, under benches, on stairs or the like. The 6 m long hose is stored on top of the suction tank and is always ready for use. Specifications: 6 m x Ø150 mm.



Suction sweeper

- Park Ranger 2155e



Technical specifications

Dimensions

Length with 2 / 3 brushes	mm	2830 / 3380
Width with 2 / 3 brushes	mm	1200 / 1570
Height with / without cabin	mm	1987 / 1850
Height with remote wander hose	mm	2150

Storage dimensions

Length with stand + 2 / 3 brushes	mm	1350 / 1500
Width with stand	mm	1200
Height with stand	mm	1920
Height with stand + remote wander hose	mm	2270

Weights

Weight with / without cabin ¹⁾	kg	1033 / 891
Payload with / without cabin ¹⁾	kg	467 / 609
Weight - hopper (excl. remote wander hose)	kg	142
Weight - front brushes, 2 brushes	kg	56
Weight - front brushes, 2 brushes + 3 rd brush	kg	84

Hopper

Hopper net volume (EN 15429-1)	l	438
Hopper gross volume	l	458
Hopper load, max.	kg	300
Tipping height	mm	1300
Fresh water tank capacity	l	100

Performance

Working width - 2 brushes	mm	1200
Working width - 3 brushes	mm	1660
Turning circle - 2 brushes and hopper (wall to wall) ²⁾	mm	3490
Turning circle - 3 brushes and hopper (wall to wall) ²⁾	mm	4750
Brush speed	rpm	0-100
Brush diameter Ø	mm	570
Suction tube diameter Ø	mm	150
Ground clearance below suction mouth	mm	30-80
Ground clearance below brushes	mm	140
Air flow	m³/h	2500
Air speed	km/h	140
Dust levels: EU-norm PM10 and PM2.5		****

Noise emissions

Sound power level L _{WA} (2000/14/EC and DIN EN ISO 3744)	dB(A)	107
--	-------	-----

CE certified according to EU directive

¹⁾ Includes: hopper, 2 brushes and 75 kg operator.

²⁾ EN 15429-1



Weed brush

- Park Ranger 2155e

Standard equipment:

Hydraulic adjustable brush	The flexible brush is controlled by the hydraulic system of the machine.
Brush regulator	The brush regulator allows you to adjust the brush speed.
Guard	The guard prevents weeds from spreading over a wide area and for collecting the weeds under the vacuum nozzle.
Vacuum nozzle	The weed brush is available in two versions - with and without vacuum nozzle. A vacuum nozzle with an integrated brush cylinder makes it possible to combine the weed brush with the suction sweeper hopper allowing you to vacuum the uprooted weeds into the hopper immediately.

Extra equipment (options):

Hopper	If a weed brush with a vacuum nozzle as standard is chosen, a hopper is a necessary option.
---------------	---



1160 mm



3000 mm

1350 mm
1987 mm

Technical specifications

Dimensions

Length	mm	3000
Width	mm	1160
Height with / without cabin	mm	1987 / 1350

Storage dimensions

Length	mm	1180
Width	mm	920
Height	mm	540

Weights

Weight with / without cabin ¹⁾	kg	937 / 797
Payload with / without cabin ¹⁾	kg	563 / 703
Weight (weed brush)	kg	102

Performance

Working width	mm	700
Brush speed	rpm	0-114
Brush diameter Ø	mm	700
Ground clearance below suction mouth	mm	30
Ground clearance below brush	mm	150
Max. recommended operating speed	km/h	4

CE certified according to EU directive

¹⁾ Includes: weed brush and 75 kg operator.





Rotary/mulch mower 1000

- Park Ranger 2155e



Standard equipment:

Tilting for cleaning	The mower can tilt up and rest on two support wheels making cleaning easy.
Stepless height adjustment	Cutting height can be infinitely adjusted via handle on the mower.
Piano wheels	Piano wheels which move the cutter in line with the manoeuvring are equipped with heavy slide bearings in their wheel forks for durability.
Lawn protection screens	The lawn protection screens protect both the blades and the lawn. The screens prevent larger sharp or hard objects from hitting the knives, thereby reducing wear of the knives. The screens also protect the lawn, as you avoid them running down into the lawn if the mower is lowered too much.

Extra equipment (options):

Mulch mower kit	The rotary mower can be changed into a mulch mower with a cover placed inside the same mowing deck. Mulching creates fine trimmings, which supply the soil with natural nutrients and reduces the need of fertilisers.
Collection mower kit	Rebuild the rotary mower to a collection mower. Collecting the grass trimmings ensures the most professional looking result and healthiest lawn. It is recommended to use the dedicated grass collector for this purpose. Please see separate data sheet for this attachment.

Technical specifications

Dimensions		
Length	mm	2800
Width	mm	1100
Height with / without cabin	mm	1987 / 1350
Storage dimensions		
Length	mm	880
Width	mm	1100
Height	mm	480
Weights		
Weight with / without cabin ¹⁾	kg	925 / 785
Payload with / without cabin ¹⁾	kg	575 / 715
Weight (rotary mower)	kg	90
Performance		
Ground clearance below mower	mm	80
No. of mower blades	pcs.	2
Cutting speed (tip speed)	m/sec.	77
Cutting width	mm	1050
Adjustable cutting height	mm	30-70
Theoretical mowing area - rotary	m ² /h	10500
Theoretical mowing area - mulch	m ² /h	10500
Theoretical mowing area - collection	m ² /h	8400
Max. recommended operating speed		
Rotary mower *	km/h	10
Mulch mower (shorter grass) *	km/h	10
Collection mower *	km/h	8
Noise emissions		
Sound power level LwA (2000/14/EC and DIN EN ISO 3744)	dB(A)	99
CE certified according to EU directive		

* Depends on grass and height.

¹⁾ Includes: rotary mower 1000 and 75 kg operator.





Rotary/mulch mower 1200

- Park Ranger 2155e

Standard equipment:

Tilting for cleaning	The mower can tilt up and rest on two support wheels making cleaning easy.
Stepless height adjustment	Cutting height can be infinitely adjusted via handle on the mower.
Piano wheels	Piano wheels which move the cutter in line with the manoeuvring are equipped with heavy slide bearings in their wheel forks for durability.
Lawn protection screens	The lawn protection screens protect both the blades and the lawn. The screens prevent larger sharp or hard objects from hitting the knives, thereby reducing wear of the knives. The screens also protect the lawn, as you avoid them running down into the lawn if the mower is lowered too much.

Extra equipment (options):

Mulch mower kit	The rotary mower can be changed into a mulch mower with a cover placed inside the same mowing deck. Mulching creates fine trimmings, which supply the soil with natural nutrients and reduces the need of fertilisers.
------------------------	--



1280 mm



2850 mm

1350 mm
1987 mm

Technical specifications

Dimensions

Length	mm	2850
Width	mm	1280
Height with / without cabin	mm	1987 / 1350

Storage dimensions

Length	mm	980
Width	mm	1280
Height	mm	480

Weights

Weight with / without cabin ¹⁾	kg	931 / 791
Payload with / without cabin ¹⁾	kg	569 / 709
Weight (rotary mower)	kg	96

Performance

Ground clearance below mower	mm	110
No. of mower blades	pcs.	2
Cutting speed (tip speed)	m/sec.	77
Cutting width	mm	1210
Adjustable cutting height	mm	30-70
Theoretical mowing area - rotary	m ² /h	12100
Theoretical mowing area - mulch	m ² /h	12100

Max. recommended operating speed

Rotary mower *	km/h	10
Mulch mower (shorter grass) *	km/h	10

Noise emissions

Sound power level L _{WA} (2000/14/EC and DIN EN ISO 3744)	dB(A)	104
--	-------	-----

CE certified according to EU directive

* Depends on grass and height.

¹⁾ Includes: rotary mower 1200 and 75 kg operator.





Rotary/mulch mower 1500

- Park Ranger 2155e



1580 mm



2810 mm

1350 mm
1987 mm

Standard equipment:

Hydraulic tipping function	Using the control handle, the cutter can be tipped into vertical position for easy cleaning and maintenance of the cutter.
Hydraulic height adjustment	The cutting height is adjustable using the hydraulic system of the machine.
Mower blades	Self-developed mower blades for optimal cutting results.
Piano wheels	Piano wheels which move the cutter in line with the manoeuvring are equipped with heavy slide bearings in their wheel forks for durability.
Lawn protection screens	The lawn protection screens protect both the blades and the lawn. The screens prevent larger sharp or hard objects from hitting the knives, thereby reducing wear of the knives. The screens also protect the lawn, as you avoid them running down into the lawn if the mower is lowered too much.

Extra equipment (options):

Mulch mower kit	The rotary mower can be changed into a mulch mower with a new set of blades and a cover placed inside the same mowing deck. Mulching creates fine trimmings, which supply the soil with natural nutrients and reduces the need of fertilisers.
------------------------	--

Technical specifications

Dimensions		
Length	mm	2810
Width	mm	1580
Height with / without cabin	mm	1987 / 1350
Storage dimensions		
Length	mm	990
Width	mm	1580
Height	mm	480
Weights		
Weight with / without cabin ¹⁾	kg	975 / 835
Payload with / without cabin ¹⁾	kg	525 / 665
Weight (rotary mower)	kg	140
Performance		
Ground clearance below mower	mm	95-115
No. of mower blades	pcs.	3
Cutting speed (tip speed)	m/sec.	77
Cutting width	mm	1500
Adjustable cutting height	mm	30-80
Theoretical mowing area - rotary	m ² /h	15000
Theoretical mowing area - mulch	m ² /h	13500
Max. recommended operating speed		
Rotary mower *	km/h	10
Mulch mower (shorter grass) *	km/h	9
Noise emissions		
Sound power level L _{WA} (2000/14/EC and DIN EN ISO 3744)	dB(A)	104
CE certified according to EU directive		

* Depends on grass and height.

¹⁾ Includes: rotary mower 1500 and 75 kg operator.





Grass collector

- Park Ranger 2155e

(for rotary mower 1000 for grass collection and leaf suction unit)

Standard equipment:

- Hydraulic tipping** Easy emptying of the hopper without leaving the cabin. Hydraulic tipping function and automatic lid opening. With a tipping height of 1800 mm it can be emptied directly into a container.
- Two-piece suction hose** The two-piece suction hose ensures easy access in case of clogging.
- Stand** A stand for easy and quick attaching/detaching of the hopper is standard equipment.

Extra equipment (options):

- Leaf suction unit** The grass collector can also be combined with the leaf suction unit for easy collection of leaves.
- Mulch and rotary mower kits** You can quickly convert the grass collector to a non-collecting mulch mower or standard rotary mower with the help of special kits available.

To be used in combination with rotary mower 1000 for grass collection and leaf suction unit - see separate datasheets.



1100 mm



3100 mm

1950 mm
1987 mm

Technical specifications

Dimensions

Length (with mower 1000)	mm	3100
Width (with mower 1000)	mm	1100
Height with / without cabin	mm	1987 / 1950

Storage dimensions

Length	mm	1700
Width	mm	1100
Height	mm	2000

Weights

Weight with / without cabin ¹⁾	kg	1130 / 1225
Payload with / without cabin ¹⁾	kg	370 / 465
Weight (grass collector)	kg	206
Weight (frame)	kg	31
Weight (rotary mower 1000)	kg	90

Hopper (grass collector)

Hopper volume	l	470
Hopper load, max.	kg	120
Tipping height	mm	1800

Performance

Air flow	m ³ /h	1500
Air speed	km/h	70
Max. recommended operating speed *	km/h	10

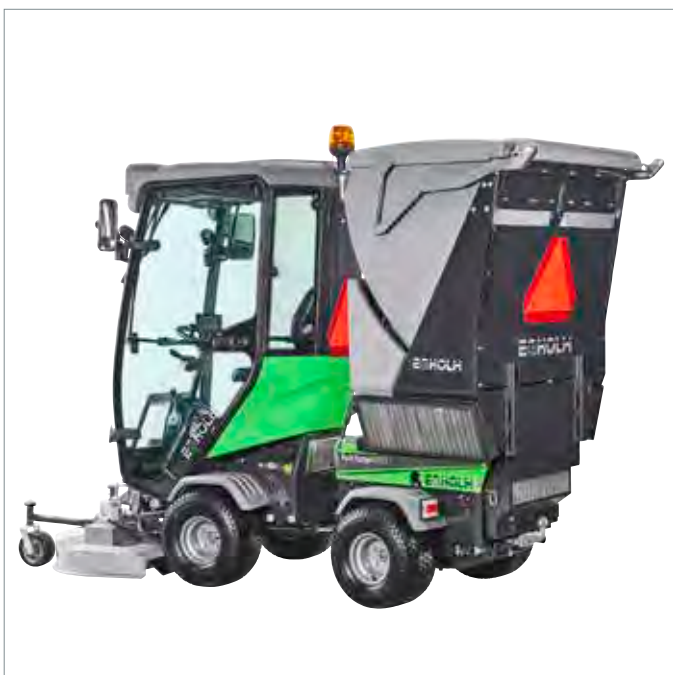
Noise emissions

Sound power level L _{WA} (2000/14/EC and DIN EN ISO 3744)	dB(A)	107
--	-------	-----

CE certified according to EU directive

* Depends on grass and height.

¹⁾ Includes: grass collector, mower 1000 and 75 kg operator.



Hedge cutter

- Park Ranger 2155e

Standard equipment:

Protective guard	For mounting on the cutter bar during transport and storage.
Support strut	The hedge cutter is equipped with support strut which are used when dismounting the tool for secure parking.
Holder	To always have spray oil to hand, a holder for spray oil is mounted on the vertical boom.



Technical specifications

Dimensions

Length	mm	3240
Width	mm	1700-3150
Height with / without cabin	mm	1987 / 1500

Storage dimensions

Length	mm	1000
Width	mm	1500
Height	mm	1650

Weights

Weight with / without cabin ¹⁾	kg	961 / 821
Payload with / without cabin ¹⁾	kg	539 / 679
Weight (cutter)	kg	24
Weight (arm)	kg	102

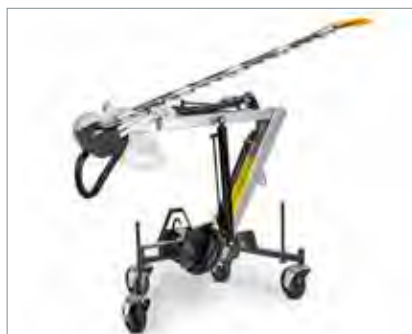
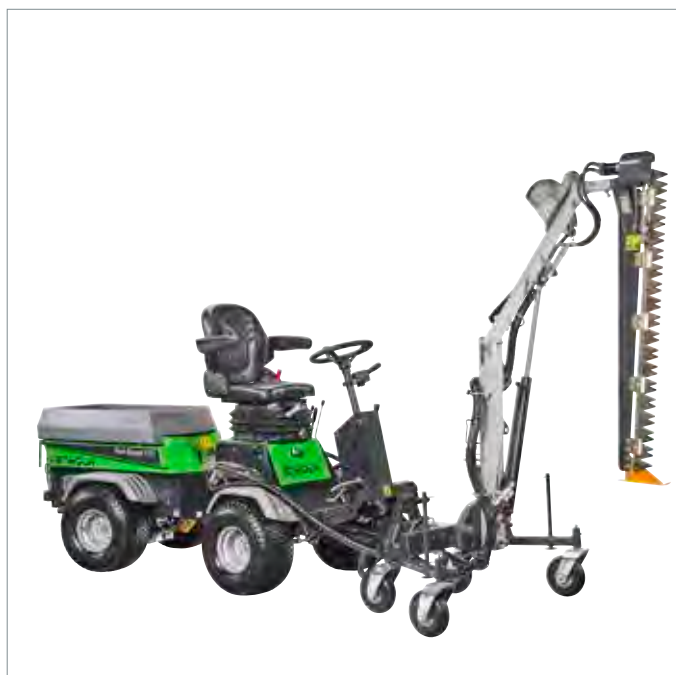
Performance

Cutting width	mm	1300
Cutting height, max. *	mm	3200
Horizontal cutting height *	mm	0-2100
Horizontal reach *	mm	0-2500
Branch thickness, max.	mm	25
Max. recommended operating speed	km/h	2
No. of blades	pcs.	36
Oil consumption	l/min.	25

CE certified according to EU directive

* The cutting boom range is stated with mounted cutter bar.

¹⁾ Includes: hedge cutter and 75 kg operator.





Flail mower

- Park Ranger 2155e



1500 mm



2950 mm

1350 mm
1987 mm

Standard equipment:

Clearing height adjustment

The clearing height is adjusted using the two forward wheels (rough and fine adjustment). Rough adjustment using seven adjusting rings in interval 0-110 mm. Fine adjusting carried out by a variable-adjustable lever.

Extra equipment (options):

Verticutter knives

Changing the flails with vertical blades converts the flail mower into a verticutter, which deals with moss and weeds without the need for pesticides. The verticutter removes moss while simultaneously cutting a thin score in the turf, so the grassroots are aired. This strengthens the grass so the turf is much more resilient to weeds.

Counterweight

It is recommend to use a counterweight on the back of the Park Ranger when using the flail mower. (2 x 18,5 kg)

Technical specifications

Dimensions

Length	mm	2950
Width	mm	1500
Height with / without cabin	mm	1987 / 1350

Storage dimensions

Length	mm	955
Width	mm	1475
Height	mm	435

Weights

Weight with / without cabin ¹⁾	kg	983 / 843
Payload with / without cabin ¹⁾	kg	517 / 657
Weight (flail mower / verticutter)	kg	148 / 145

Performance

No. of flails	pcs.	76
No. of vertical blades (max.)	pcs.	38
Flail - clearing width	mm	1226
Flail - clearing height	mm	1-110
Rotation of blades	rpm	2800
Verticutter - clearing width	mm	1172
Verticutter - clearing depth	mm	0-15
Max. recommended operating speed	km/h	10

Noise emissions

Sound power level LwA (2000/14/EC and DIN EN ISO 3744)	dB(A)	101
--	-------	-----

CE certified according to EU directive

¹⁾ Includes: flail mower and 75 kg operator.





Lawn edger

- Park Ranger 2155e

Standard equipment:

Rotary cutter with two blades	The lawn edger has two blades for optimal performance. While cutting the edge the machine also cultivates the ground for a perfect result.
Adjustable working depth	The working depth is regulated according to ground conditions, by adjusting the support wheel.
Reversible blade	Makes it possible to cutting outwards or inwards.
Adjustable offset	Opens up the possibilities of cultivating soil.



Technical specifications

Dimensions

Length	mm	2340
Width	mm	1170-1300
Height with / without cabin	mm	1987 / 1350

Storage dimensions

Length	mm	540
Width	mm	920
Height	mm	500

Weights

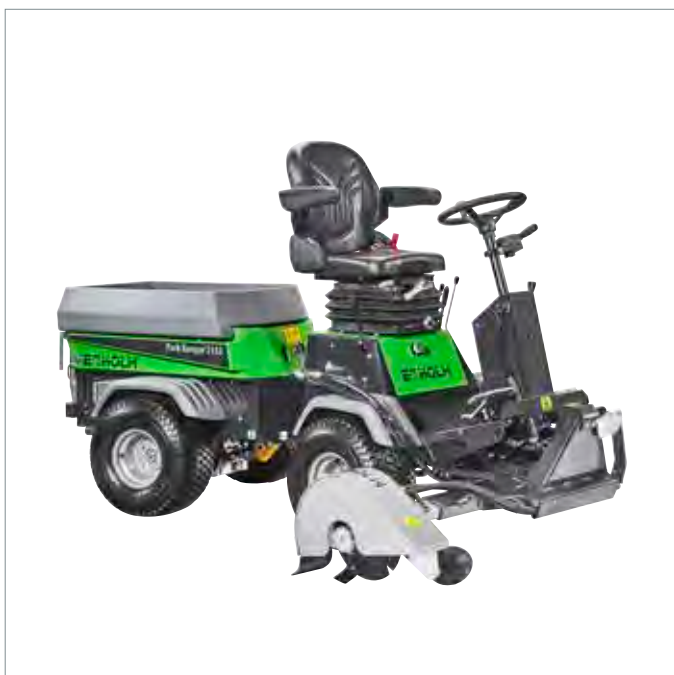
Weight with / without cabin ¹⁾	kg	891 / 751
Payload with / without cabin ¹⁾	kg	609 / 749
Weight (lawn edger)	kg	56

Performance

Clearance height under cutter	mm	140
Cutting depth (max.)	mm	95
Offset	mm	150
Max. recommended operating speed	km/h	2

CE certified according to EU directive

¹⁾ Includes: lawn edger and 75 kg operator.





Video



EGHOLM

Environmental rake

- Park Ranger 2155e

Standard equipment:

Rear facing draw hoes The environmental rake has rear facing draw hoes which does not catch on roots.

Extra equipment (options):

Rear lifter A mandatory option to lift and lower the rake.



1100 mm



2600 mm



1350 mm
1987 mm

Technical specifications

Dimensions

Length	mm	2600
Width	mm	1100
Height with / without cabin	mm	1987 / 1350

Storage dimensions

Length	mm	500
Width	mm	1100
Height	mm	260

Weights

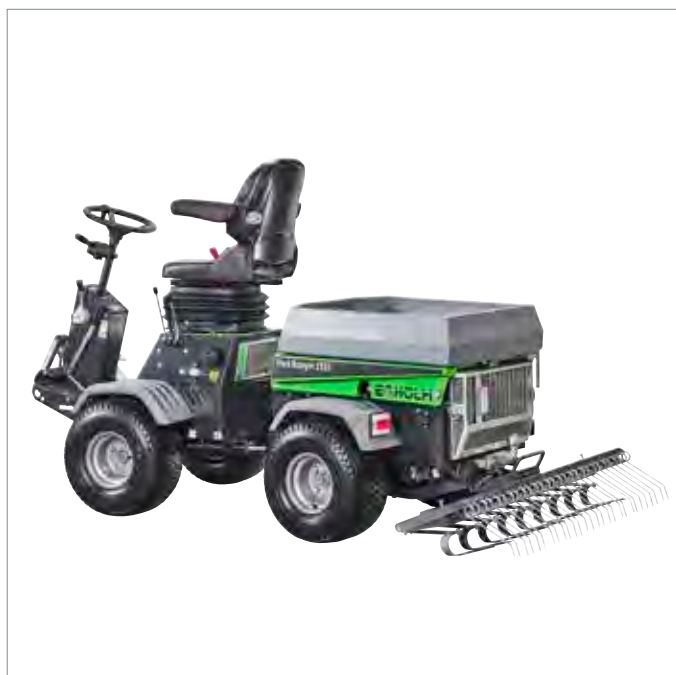
Weight with / without cabin ¹⁾	kg	867 / 727
Payload with / without cabin ¹⁾	kg	633 / 773
Weight (environmental rake)	kg	32

Performance

Working width	mm	1100
Ground clearance below rake	mm	80
Working depth	mm	20-40

CE certified according to EU directive

¹⁾ Includes: environmental rake and 75 kg operator.



Leaf suction unit

- Park Ranger 2155e

Standard equipment:

- Leaf collection hose** The leaf collection hose has a long reach of 4,2 m.
- Adjustable handle** An adjustable handle on the leaf suction hose makes it easy for the user to adjust the working position. The supporting arm prevents the hose from resting on and damaging hedges and ornamental plants during work.
- Central adjustment** Central adjustment of the casters ensures quick and easy adjustment of suction height, making sure that it fits both the surface and the amount of leaves perfectly.

Extra equipment (options):

- Grass collector** Must be combined with the grass collector hopper in order to function. Please see separate data for grass collector/hopper specifications and functions.



1150 mm



2840 mm

1950 mm
1987 mm

Technical specifications

Dimensions

Length	mm	2840
Width	mm	1150
Height with / without cabin	mm	1987 / 1950

Storage dimensions

Length	mm	800
Width	mm	1050
Height	mm	900

Weights

Weight with / without cabin ¹⁾	kg	1131 / 991
Payload with / without cabin ¹⁾	kg	369 / 509
Weight (grass collector)	kg	206
Weight (frame)	kg	31
Weight (leaf suction unit)	kg	90

Performance

Vacuum width	mm	1050
Ground clearance under vacuum nozzle	mm	180
Leaf collection hose reach	mm	4200
Suction hose diameter Ø	mm	125
Leaf collection hose diameter	mm	125
Air flow between 2 turbines	m³/h	2250
Air speed in leaf collection hose	km/h	184
Max. recommended operating speed	km/h	6

Noise emissions

Sound power level LwA (2000/14/EC and DIN EN ISO 3744)	dB(A)	107
--	-------	-----

CE certified according to EU directive

¹⁾ Includes: leaf suction unit, grass collector and 75 kg operator.





Tipping shovel

- Park Ranger 2155e

Standard equipment:

Lifting capacity: 100 kg The tipping shovel makes light work of transporting gravel, sand or mould and saves the operator many lifts during the working day. 100 kg is easily transported from one place to another - even on the narrowest paths.

Hydraulic tipping function The hydraulic tipping function ensures an easy handling and is perfect when unloading over obstacles like for example small hedges. The transported material is spread evenly by unloading. For a perfect result level the layer with the edge of the shovel.

Robust steel construction The shovel features a robust steel construction, which enables it to manage a variety of different applications besides transporting material, for example to scrape off unwanted grass growth from flagged areas.



1045 mm



2840 mm

1350 mm
1987 mm

Technical specifications

Dimensions

Length	mm	2840
Width	mm	1045
Height with / without cabin	mm	1987 / 1350

Storage dimensions

Length	mm	670
Width	mm	1045
Height	mm	405

Weights

Weight with / without cabin ¹⁾	kg	875 / 735
Payload with / without cabin ¹⁾	kg	625 / 765
Weight (tipping shovel)	kg	40

Performance

Volume	l	66
Lifting capacity	kg	100
Ground clearance under shovel	mm	480

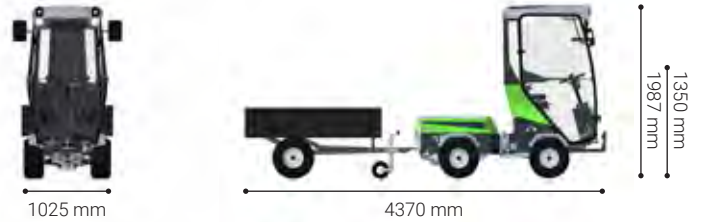
CE certified according to EU directive

¹⁾ Includes: tipping shovel and 75 kg operator.



Tipper trailer

- Park Ranger 2155e



Standard equipment:

- Steel chassis** The tipper trailer features a strongly built steel chassis with fixed headboard and sides.
- Hydraulic tip function** The unloading of the 0,44 m³ trailer is easily done via the joystick from the comfort of the driver seat.
- Support wheel** The support wheel allows for easy attaching, detaching and storage.

Extra equipment (options):

- Side extensions** The optional side extensions increase the volume of the trailer. The side extensions are 40 cm in the height.
- Lighting** The galvanized beam with rear lights makes the trailer visible in traffic.

Technical specifications

Dimensions		
Length	mm	4370
Width	mm	1025
Height with / without cabin	mm	1987 / 1350
Storage dimensions		
Length	mm	2100
Width	mm	1025
Height	mm	850
Weights		
Weight with / without cabin ¹⁾	kg	973 / 831
Payload with / without cabin ¹⁾	kg	527 / 669
Weight (tipper trailer)	kg	138
Performance		
Platform, length	mm	1500
Platform, width	mm	950
Platform, height	mm	310
Platform, height with optional side extensions	mm	350
Volume	m ³	0,44
Volume with side extensions	m ³	1,02
Load carrying capacity, max.	kg	440
Loading height	mm	850
CE certified according to EU directive		

¹⁾ Includes: tipper trailer and 75 kg operator.



Load carrier with tip

- Park Ranger 2155e



1020 mm



2470 mm

1350 mm
1987 mm

Standard equipment:

Hydraulic tipping	The hydraulic tipping action makes it fast and easy to empty the load carrier with tip.
Removable sides	The volume can be adjusted with the removable sides.
Lockable back flap	The back flap can be locked in the horizontal position to allow for the transportation of planks, garden tools etc.
Stand	The supplied stand allows for simple and quick fitting and removal of the load carrier with tip. One person can therefore easily attach / detach the load carrier with tip alone.

Technical specifications

Dimensions		
Length	mm	2470
Width	mm	1020
Height with / without cabin	mm	1987 / 1350
Storage dimensions		
Length with stand	mm	1400
Width with stand	mm	930
Height with stand	mm	1360
Weights		
Weight with / without cabin ¹⁾	kg	929 / 786
Payload with / without cabin ¹⁾	kg	571 / 714
Weight (load carrier with tip)	kg	94
Performance		
Platform, length	mm	1040
Platform, width	mm	860
Platform, height	mm	300 / 600
Volume	m ³	0,4
Load carrying capacity, max.	kg	300
Loading height	mm	700-1040
CE certified according to EU directive		

¹⁾ Includes: load carrier and 75 kg operator.





Snow sweeper

- Park Ranger 2155e

Standard equipment:

Trapeze mounting	The trapeze-mounting ensures the snow sweeper remains clear of the wheels of the utility machine at all times, whatever the angle. The snow sweeper automatically turns with the utility machine - always sweeping in front of the wheels of the utility machine.
Reverse rotation function	Reversing the brush rotation ensures that the operator can sweep material when reversing out of an alley or parking spot, which ensures an excellent result.
Adjustable speed	The rotation speed can easily be adjusted from the cabin to match the need for sweeping.
Support stand	A support stand with a wheel is built into the snow sweeper for easy storage.

Extra equipment (options):

Extended brush guard	Attaching a brush guard extends the snow sweeper cover, which minimises the snow whirling up on the front wind-screen. Furthermore, the guard makes it easier to control the direction of swept sand and gravel during summer operation. This can be retrofitted on existing snow sweepers as well.
Anti-corrosion treatment	The anti-corrosion treatment will extend the life of the attachment.



1220 mm



3090 mm

1350 mm
1987 mm

Technical specifications

Dimensions

Length	mm	3090
Width	mm	1220
Height with / without cabin	mm	1987 / 1350

Storage dimensions

Length	mm	900
Width	mm	1220
Height	mm	650

Weights

Weight with / without cabin ¹⁾	kg	939 / 799
Payload with / without cabin ¹⁾	kg	561 / 701
Weight (snow sweeper)	kg	104

Performance

Clearing width - straight	mm	1220
Clearing width - angled 25°	mm	1140
Ground clearance below brush	mm	420
Brush diameter Ø	mm	550
Max. recommended operating speed	km/h	10
Theoretical sweeping capacity	m ² /h	12200
Handling snow depth up to	mm	150
Brush speed	rpm	255
Turning angle		25°

CE certified according to EU directive

¹⁾ Includes: snow sweeper and 75 kg operator.



Snow blower

- Park Ranger 2155e



1020 mm



2930 mm



1350 mm
1987 mm

Standard equipment:

- Adjustable chute** The snow blower has an adjustable chute that ejects snow 1-10 m away.
- Blade and skid** The snow blower has a replaceable blade and an adjustable skid.

Extra equipment (options):

- Counterweight** If the snow blower is being used without the salt and sand spreader we recommend the use of a counterweight for balancing.
- Anti-corrosion treatment** The anti-corrosion treatment will extend the life of the attachment.

Technical specifications

Dimensions

Length	mm	2930
Width	mm	1020
Height with / without cabin	mm	1987 / 1350

Storage dimensions

Length	mm	790
Width	mm	1010
Height	mm	1050

Weights

Weight with / without cabin ¹⁾	kg	951 / 811
Payload with / without cabin ¹⁾	kg	549 / 689
Weight (snow blower)	kg	116

Performance

Clearing width	mm	1000
Feed intake height	mm	600
Ground clearance below snow blower	mm	420
Auger diameter	mm	380
Blower diameter	mm	380
Axle revolutions	rpm	1000
Max. recommended operating speed	km/h	7

Noise emissions

Sound power level LwA (2000/14/EC and DIN EN ISO 3744)	dB(A)	103
--	-------	-----

CE certified according to EU directive

¹⁾ Includes: snow blower and 75 kg operator.





Snow plough

- Park Ranger 2155e

Standard equipment:

- Safety tilt system** When operating in deep snow there is a risk of hitting obstacles. The safety tilt function reduces the risk of damages both to the plough and surroundings.
- Rubber scraper edge** 100 mm high, 25 mm thick and 1300 mm wide rubber scraper. The scraper edge can be used on two sides giving double usage and extended lifetime. The rubber scraping edge is ideal for use with melting snow and also scrapes the surface thoroughly without damaging it.
- Floating skids** The 2 skids are height adjustable and ensures that the blade follows ground variations.

Extra equipment (options):

- Anti-corrosion treatment** The anti-corrosion treatment will extend the life of the attachment.



Technical specifications

Dimensions

Length	mm	2700
Width	mm	1300
Height with / without cabin	mm	1987 / 1350

Storage dimensions

Length	mm	550
Width	mm	1300
Height	mm	545

Weights

Weight with / without cabin ¹⁾	kg	899 / 759
Payload with / without cabin ¹⁾	kg	601 / 741
Weight (snow plough)	kg	64

Performance

Clearing width - straight	mm	1300
Clearing width - inclined	mm	1130
Ground clearance below scraper	mm	400
Ground clearance under support strut	mm	350
Max. recommended operating speed	km/h	16
Handling snow depth up to	mm	350
Turning angle		30°
Theoretical performance	m ² /h	20800

CE certified according to EU directive

¹⁾ Includes: snow plough and 75 kg operator.



Snow V-plough

- Park Ranger 2155e



1400 mm



2590-3010 mm



1350 mm
1987 mm

Standard equipment:

Hydraulic angle adjustment	Each side/blade can be adjusted from the controls inside the cabin, making it easy for the operator to adjust the blades when needed.
Vibration damping	A-frame featuring integrated vibration damping, which increases comfort and reduces noise.
Vulkollan scraper edge	125 mm high, 25 mm thick and 700 mm wide. The vulcanised rubber scraping edge is good for surfaces that require extra care. The snow V-plough can be mounted with either vulcanised rubber scraper or steel scraper.
Steel scraper edge	The snow V-plough can be mounted with either steel scraper or vulcanised rubber scraper.
Safety tilt function	When operating in deep snow there is a risk of hitting obstacles. The safety tilt function of lower part of the V-plough reduces the risk of damages both to the plough and surroundings.
Floating skids	The 2 skids are height adjustable and ensures that the plough follows ground variations.

Extra equipment (options):

Anti-corrosion treatment	The anti-corrosion treatment will extend the life of the attachment.
---------------------------------	--

Technical specifications

Dimensions

Length	mm	2590-3010
Width (straight)	mm	1400
Height with / without cabin	mm	1987 / 1350

Storage dimensions

Length	mm	500
Width	mm	1200
Height	mm	600

Weights

Weight with / without cabin ¹⁾	kg	943 / 803
Payload with / without cabin ¹⁾	kg	557 / 697
Weight (snow V-plough)	kg	108

Performance

Clearing width - straight	mm	1400
Clearing width - inclined	mm	1200-1400
Clearing width - 30°, Y- & V-form	mm	1200
Ground clearance below scraper	mm	140
Ground clearance under support strut	mm	125
Max. recommended operating speed	km/h	16
Handling snow depth up to	mm	500
Turning angle		30°
Theoretical performance	m ² /h	22400

CE certified according to EU directive

¹⁾ Includes: snow V-plough and 75 kg operator.





Salt and sand spreader

- Park Ranger 2155e



1020 mm



2550 mm

1435 mm
1987 mm

Standard equipment:

Durable material	All parts that get in contact with salt and sand are rust free, made of synthetic material or stainless steel.
Stirrer	The stirrer prevents blocking, crushes lumps and ensures precise and uniform spreading - and thereby even thawing of the ground. Made of hardened Hardox steel the stirrer fingers are extremely robust.
Material storage	There is space for extra bags of salt and sand on top of the hopper grate, enabling the operator to fill the salt and sand spreader on site. Please note the maximum loading capacity.
Stand	A stand for attaching/detaching is delivered with the spreader as standard. The stand has wheels, making it easy to move the spreader into storage without heavy lifting.
Tarpaulin cover	A cover keeps the material dry and thereby indirectly improve the spreading accuracy.

Extra equipment (options):

Guard for salt stop	The guard ensures that tiny material such as vacuum salt, does not just run out of the spreader, which reduces the waste and increase the operation efficiency.
Anti-corrosion treatment	The anti-corrosion treatment will extend the life of the attachment.

Technical specifications

Dimensions

Length	mm	2550
Width	mm	1020
Height with / without cabin	mm	1987 / 1435

Storage dimensions

Length with stand	mm	1175
Width with stand	mm	800
Height with stand	mm	1350

Weights

Weight with / without cabin ¹⁾	kg	935 / 795
Payload with / without cabin ¹⁾	kg	565 / 705
Weight (spreader)	kg	100
Weight (stand)	kg	31

Spreader

Volume	l	210
Spreader load, max.	kg	350
Loading height	mm	1250

Performance

Spreading width	mm	1000-5000
Max. recommended operating speed	km/h	16

CE certified according to EU directive

¹⁾ Includes: salt and sand spreader and 75 kg operator.



Notes

- Park Ranger 2155e

This image shows a single sheet of white paper with horizontal ruling lines. The lines are evenly spaced and run across the width of the page. There are no margins, text, or other markings on the paper.

Notes

- Park Ranger 2155e

This image shows a single sheet of white paper with horizontal ruling lines. The lines are evenly spaced and run across the width of the page. There are no margins, text, or other markings on the paper.

Honest Work.

Egholm A/S develops, produces and markets utility machines that keep roads, parks and outdoor areas clean and inviting all year round. We supply functional quality machines and attachments to people who do an honest day's work keeping our cities clean and attractive. With special attachments developed for the machines, Egholm machines deliver perfect results no matter the task at hand. Built by craftsmen in Denmark, Egholm machines are in operation in cities and parks all over the world.

Honest Machines.

Egholm utility machines are developed by people who are passionate about technology and innovation. We listen to the people driving, using and servicing Egholm machines, because they are the true experts. It is our mission to design, build and market utility machines that deliver perfect results in real life. Egholm machines are honest machines - not just because they deliver comfort, safety and strong end results: They are also a sound investment for years to come and give you outstanding return on your investment.

Honest People.

We want you to think of us as your partner in every single way. And we always insist on reliability, trust and honesty in our partnership with you and with our network of dealers and service partners. We are straightforward and direct in our communication and in our dealings with everyone. Our belief in hard work and unwillingness to compromise helps us deliver the quality for which we are known. And we believe it is reflected by the machines we build for you, as well.

Egholm A/S

Transportvej 27
7620 Lemvig, Denmark
T.: +45 97 81 12 05
www.egholm.eu - info@egholm.dk

Egholm GmbH

Am Hafen 24
38112 Braunschweig, Germany
T.: +49 (0) 531 129 77-0
www.egholm.de - info@egholm.de